

Variable device mount for sports facilities - Individual.Lens.Optic - direct wide distribution - visually continuous

Device mount made of a galvanised, profiled steel sheet; surface coated with polyester resin. Fastening to the mounting rail with design-integrated snap-in catches, incl. safety bar for guaranteeing protection against ball impact. Variable position on the mounting rail. Housing colour traffic white RAL 9016; Direct, wide-beam light distribution using individual LED lens optic made of PMMA plastic. 3-row LED arrangement. Light control components are easy to maintain thanks to the easily cleaned surface. Heat-resistant cables including connection cable 1 m and rapid installation plug connector with tool-less phase pre-selection and locating finger. The safety bar to guarantee protection against ball impact is included in the scope of delivery. They are exchangeable, permit modernisation and reliably prolong the service life of the overall system.

CHARACTERISTICS

Order number	18515116650
EAN number	4020863435814
Commodity code	94051190
Certification mark	IP 20, Protection class I, ENEC10 VDE, F, Protection against tennis ball impact, Protection against shuttlecocks, Protection against squash ball impact, Protection against ball impact, Indoor, CE
Impact resistance (IK rating)	IK03 (20°C bis 35°C)
Ambient temperatur	ta 20°C to 35°C
Special properties	Ready for IoT
Warranty period	5 years
State funding programs	BEG - Federal funding for efficient buildings (valid only for Germany)

ELECTRICAL ENGINEERING

Controller	Electronic driver DALI2 (1 pcs.)
System output	73W
Mains voltage	230V/50Hz
Circuit breakers (inrush current)	13 pieces/B10, 24 pieces/B16, 25 pieces/C10, 40 pieces/C16
Energy efficiency class/light source	C

LIGHTING TECHNOLOGY

Placement	LED, Colour rendering/Light colour CRI ≥ 80 / 4000K
Colour tolerance (MacAdam)	3SDCM
Photobiological safety (Luminaire)	RG1
Nominal luminous flux	12547lm
LED service life	50000h L80/B10 (Tq 35°C)
Luminaire luminous efficiency	173lm/W
Beam angle	95° (C0) / 95° (C90)
UGR lat./long.	21.4 / 21.8

MECHANICS

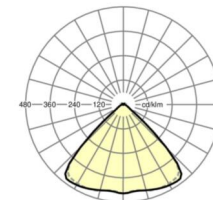
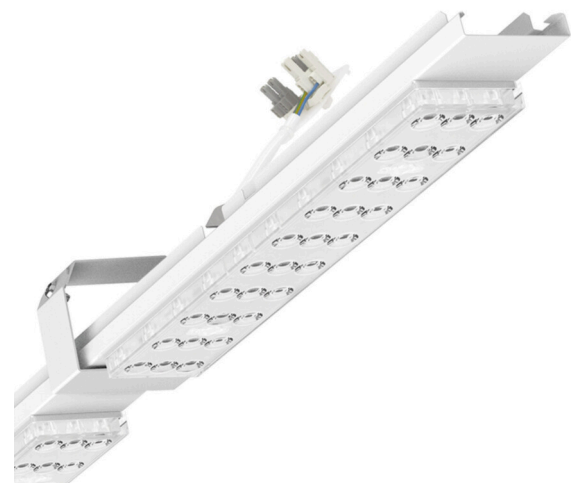
Housing colour	traffic white RAL 9016
Dimensions (LxWxH/DxH)	2299mm x 55mm x 33mm
Weight (net)	2.6kg
Type of installation	Mounting rail system installation

Dimensions

L	2299 mm	Length
B	55 mm	Width
H	33 mm	Height

DEEP-LINK

<https://www.regiolux.de/en/article/18515116650>



Reference	LED 13000lm 840
ηLB	100 %
Φ ↓/↑	98 % / 2 %
UGR lat./long.	21.4 / 21.8

